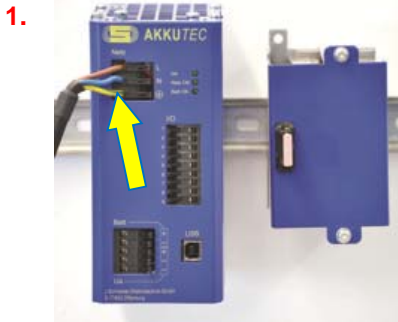


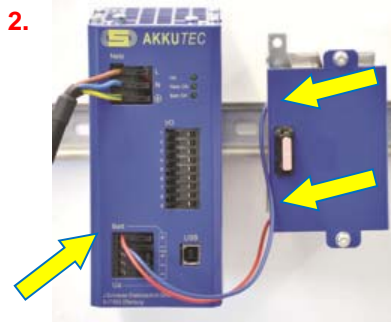
# Snabbstart: AKKUTEC 2405-0 USB

2014-09-12

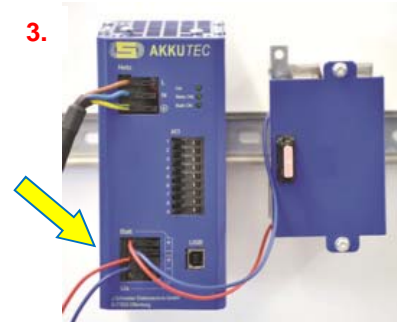
## Elektrisk anslutning och drifttagning



1. Anslut till elnätet (230 V AC)



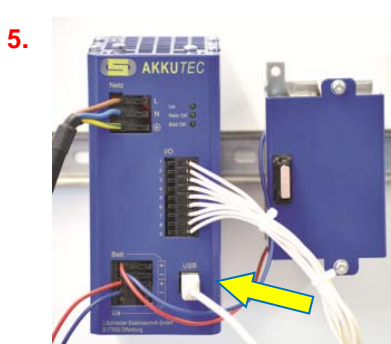
2. Anslut batteriet till batterianslutningarna på AKKUTEC



3. Anslut lasten till 24 V DC utgången på AKKUTEC



4. Inkoppling ingångar / utgångar (temp. sensor, avstängning, nätverk ok, batt ok)

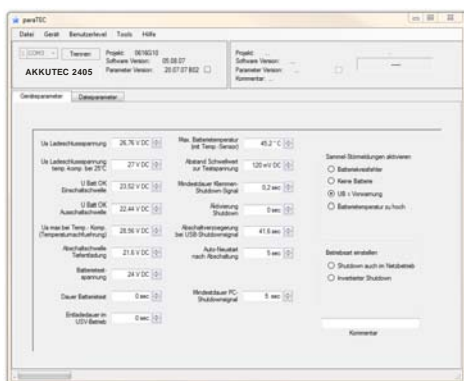


5. Anslut USB kabeln till PC'n om mjukvara används.



6. AKKUTEC fulladdat. Lysdioderna "Vout", "Network OK" och "Batt OK" tänds.

## Parameter-Software



Med programvaran **paraTEC** kan du ställa in parametrar som utspänning, tillåtet spänningsområde, generella fel osv. Fråga efter mer information.

## Shutdown-Software



**TECControl**-Software automatiserar avstängning i händelse av strömavbrott och kontrollerad omstart av systemet då strömmen är tillbaka. Okontrollerade processtopp undviks. Fråga efter mer information.

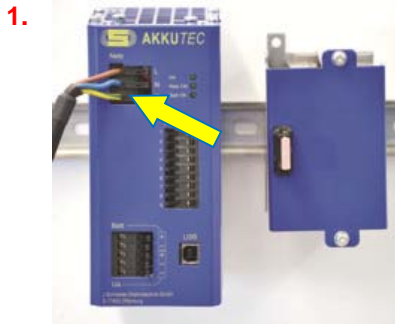
**Varning! Beakta säkerhetsanvisningarna i installationsanvisningen.**  
Installation ska endast utföras av elektriker.  
Denna snabbstartsguide är endast ett stöd.

Tel. 08-449 80 80  
Fax. 08-449 80 89  
www.elrond.se  
info@elrond.se

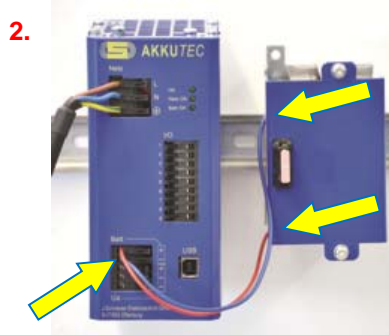
# Quickstart: AKKUTEC 2405-0 USB

2014-09-12

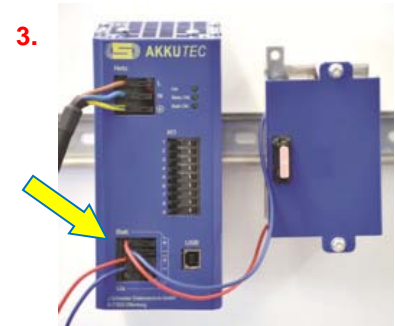
## Electrical Connection and Start-up



Connect the **AKKUTEC** to the mains (230 V AC)



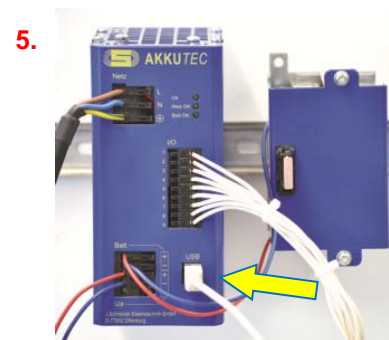
Connect the battery to the battery connector of the **AKKUTEC**



Connect the load to the buffered 24 V DC output of the **AKKUTEC**



Wiring of the inputs/outputs (Temperature sensor, Shutdown, Mains ok, Batt ok)

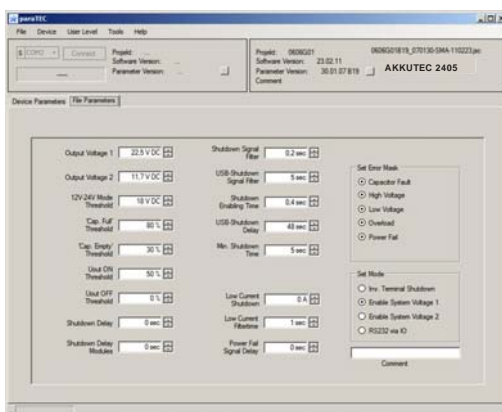


Connect the USB-cable to the PC



**AKKUTEC** is completely charged. The LEDs „Ua“, „Netz OK“ and „Batt OK“ illuminate

## Parameterizing-Software



Device parameters such as output voltage, permissible voltage range, general error a.s.o. can be adjusted with the **paraTEC** software.

Please ask for further information!

## Shutdown-Software



The **TECControl**-Software automates the system-shutdown at power failure and the controlled system-restart after power recovery.

Please ask for further information!

**ATTENTION!** The safety notes of the operating instructions have to be regarded. Installation and wiring work may only be carried out by electricians. The sheet „Quickstart“ is only a support.

Tel 08-449 80 80  
Fax 08-449 80 89  
www.elrond.se  
info@elrond.se